



UNIVERSITY
of HAWAII[®]

HILO

Why University 101?

Matt Platz

VCAA

August 19, 2015

**[http://hilo.hawaii.edu/uhh/vcaa/
Univ101.php](http://hilo.hawaii.edu/uhh/vcaa/Univ101.php)**



UNIVERSITY of HAWAII
HILO

Mahalo nui to the UNI 101 Committee

Kurt de la Cruz, Emmeline de Pillis*,
Tom De Witt, Norbert Furumo; Gail
Makuakane-Lundin, Ho'oululahui Perry,
Jake Picus, Comfort Sumida

[http://hilo.hawaii.edu/uhh/vcaa/
documents/UNI101.pdf](http://hilo.hawaii.edu/uhh/vcaa/documents/UNI101.pdf)

Mahalo nui to you for stepping up to teach!



UNIVERSITY of HAWAII
HILO

Executive Summary

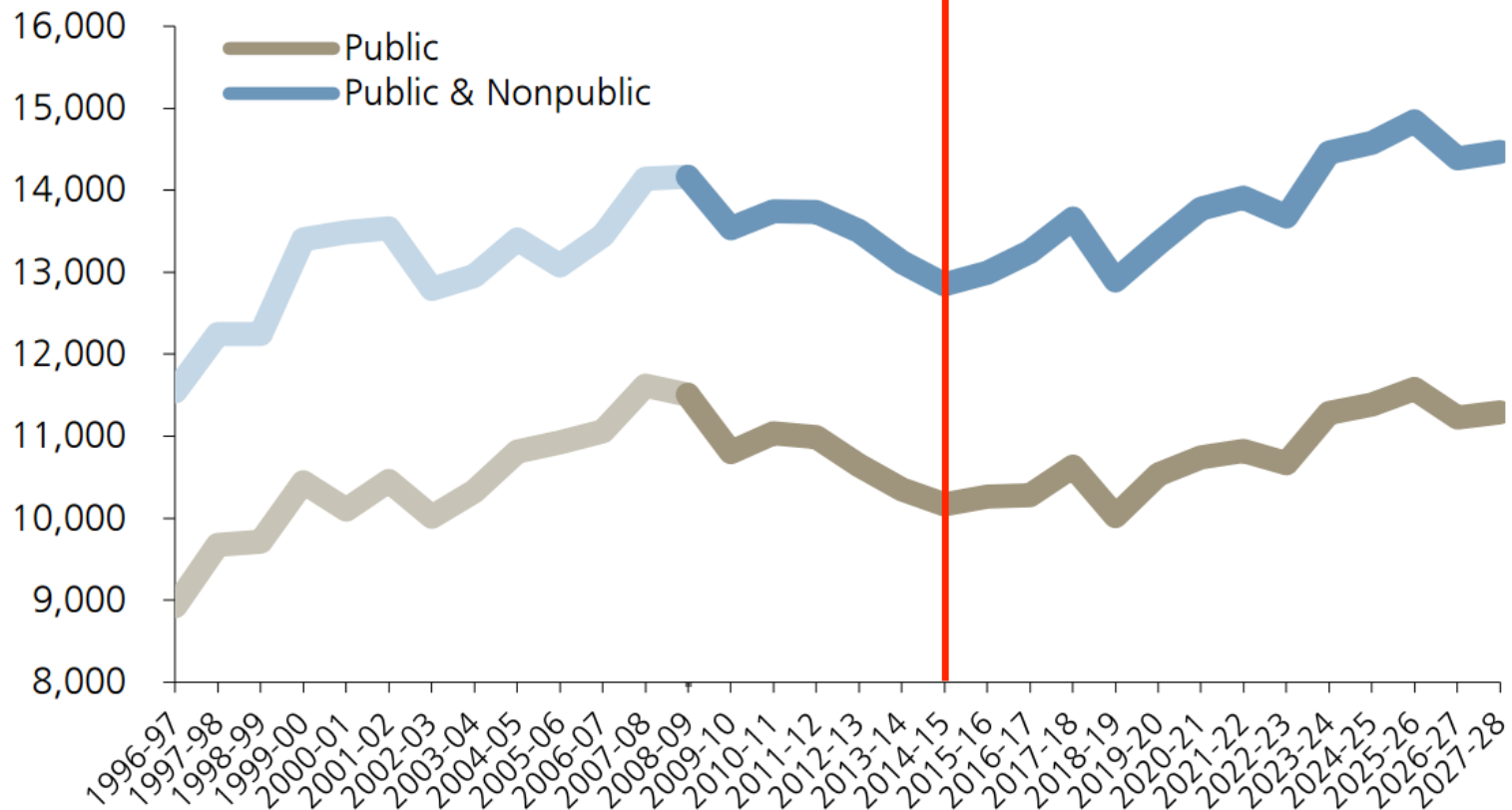
- Attend class, read the books, do the HW, time management, pro-active advising
- Choose a major asap (UNI 102, spring)
- Health Profession Advising (PB13)
<http://hilo.hawaii.edu/uhh/vcaa/HPAC.php>
- Liberal Studies Tracks in Health Care (Administration, Community Health)
- Social Science Advising (KES, PSY-Cheryl Ramos)
- Surveys in the second and the final week



UNIVERSITY of HAWAII
HILO

Projections of High School Graduates

Production of High School Graduates

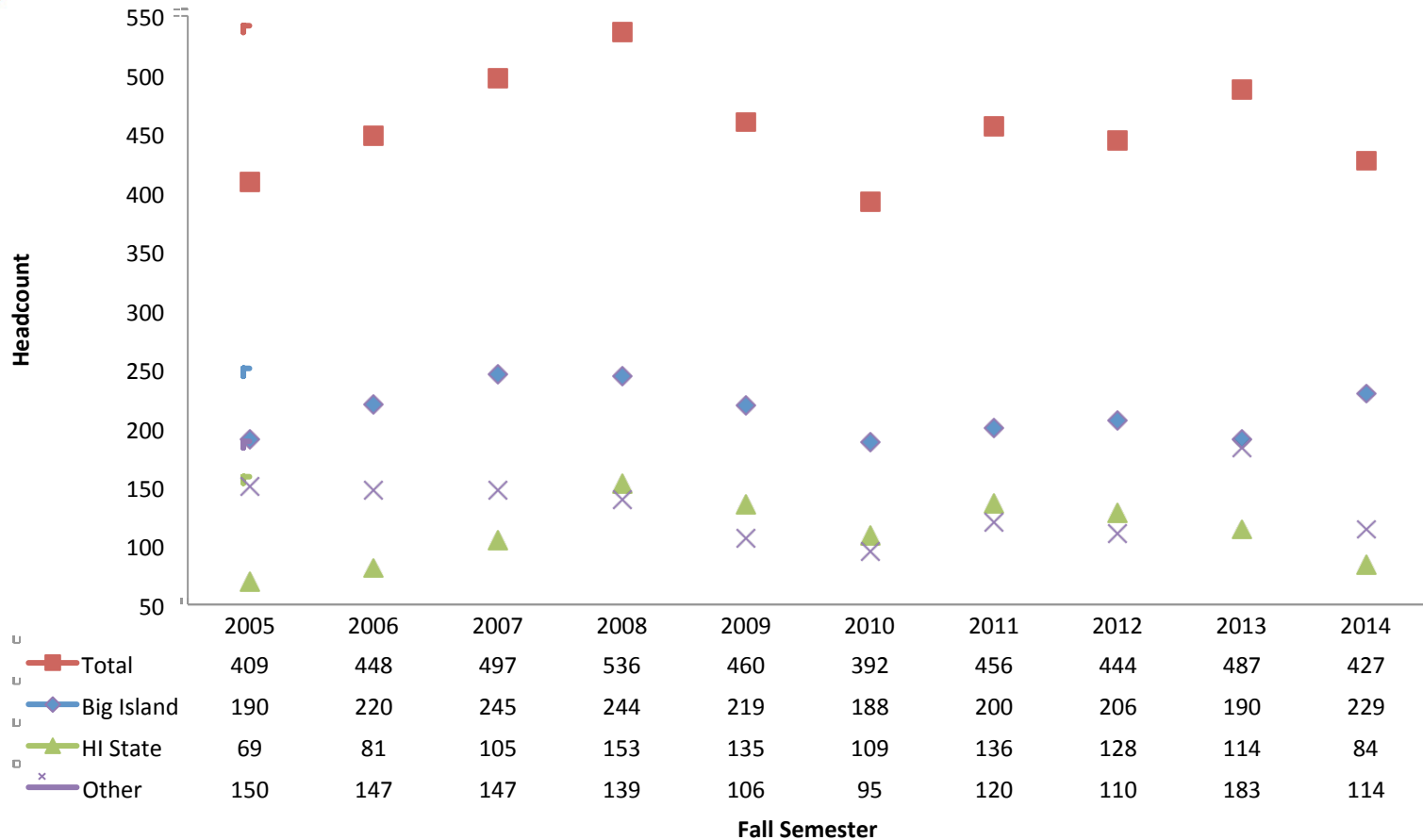


Western Interstate Commission for Higher Education (WICHE), Projections of High School Graduates for Hawaii
<http://www.wiche.edu/info/knocking-8th/profiles/hi.pdf>



UNIVERSITY of HAWAII
HILO

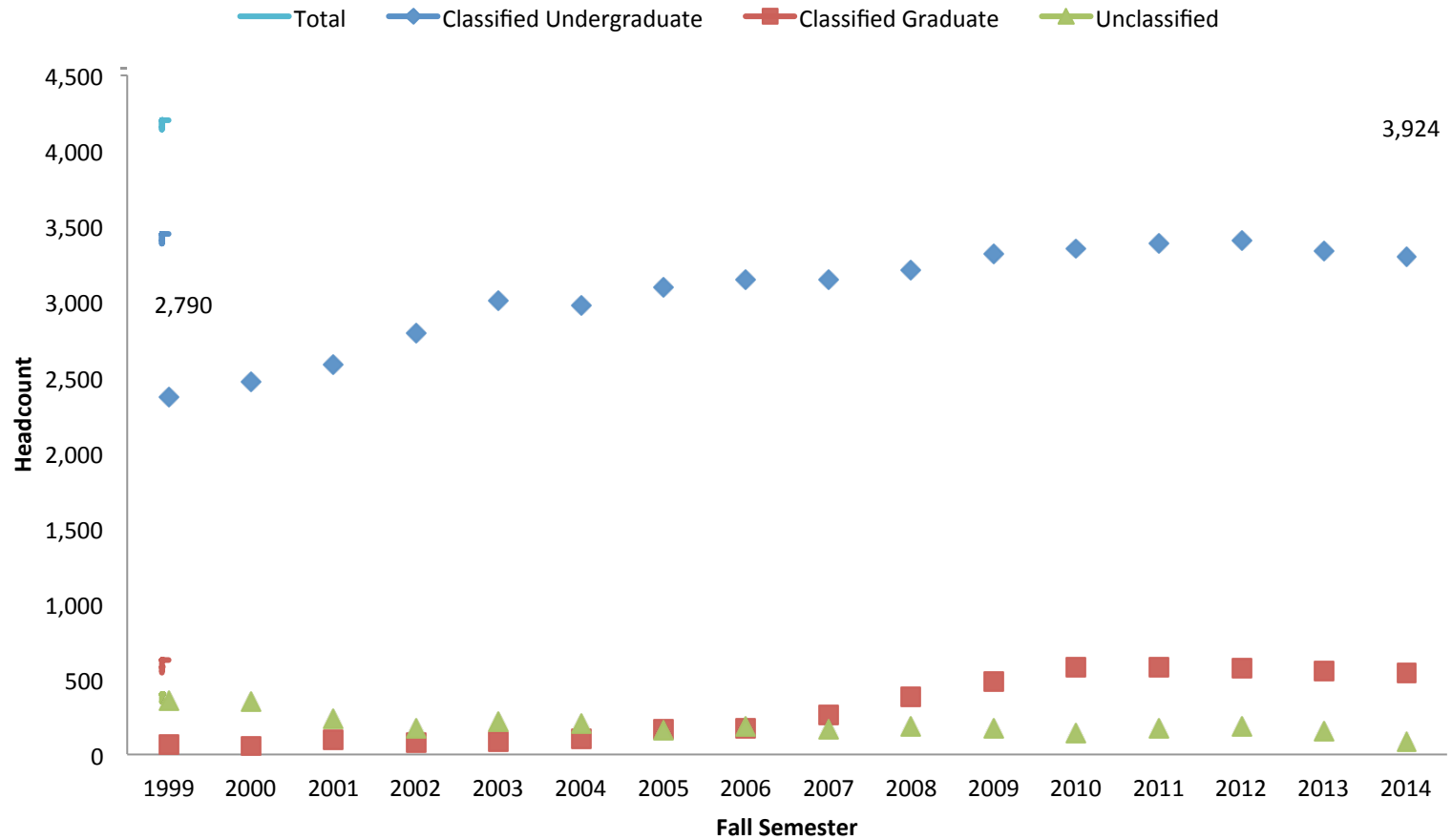
First-Time Freshmen





UNIVERSITY of HAWAII*
HILO

UHH Historical Enrollment





UNIVERSITY of HAWAII
HILO

Historical UG Enrollment by Tuition Status

	Fall 2010 Σ=3,429		Fall 2011 Σ=3,487		Fall 2012 Σ=3,533		Fall 2013 Σ=3,437		Fall 2014 Σ=3,347	
	n	%	n	%	n	%	n	%	n	%
International Student	165	4.8%	166	4.8%	164	4.6%	157	4.6%	154	4.6%
Non-Resident	539	15.7%	523	15.0%	544	15.4%	533	15.5%	570	17.0%
Resident	2,440	71.2%	2,487	71.3%	2,514	71.2%	2,393	69.6%	2,319	69.3%
WUE	285	8.3%	311	8.9%	311	8.8%	354	10.3%	304	9.1%



UNIVERSITY of HAWAII
HILO

Historical UG Enrollment by Permanent Address

	Fall 2010 Σ=3,429		Fall 2011 Σ=3,487		Fall 2012 Σ=3,533		Fall 2013 Σ=3,437		Fall 2014 Σ=3,347	
	n	%	n	%	n	%	n	%	n	%
Big Island	1,806	52.7%	1,850	53.1%	1,922	54.4%	1,825	53.1%	1,825	54.5%
HI State	637	18.6%	649	18.6%	620	17.5%	593	17.3%	534	16.0%
International Student	165	4.8%	166	4.8%	164	4.6%	157	4.6%	154	4.6%
Other	821	23.9%	822	23.6%	827	23.4%	862	25.1%	834	24.9%



UNIVERSITY of HAWAII
HILO

Top 10 First Year Courses for Full-Time, First-Time Freshmen: 10 Years

Rank	Course	# of Registrations
1	PSY 100	3,351
2	ANTH 100	2,820
3	HIST 151	2,565
4	ENG 100T	2,223
5	HWST 111	2,052
6	ENG 100	1,890
7	SOC 100	1,836
8	MATH 100	1,830
9	BUS 100	1,812
10	UNIV 101	1,599



UNIVERSITY of HAWAII*
HILO

First Year Courses (#11-20) for Full-Time, First-Time Freshmen: Ten Years

Rank	Course	# of Registrations
11	GEOG 102	1,164
12	PHIL 100	1,080
13	MARE 171	1,032
14	CHEM 124	987
15	ART 101	957
15	CHEM 124L	957
17	MATH 103	912
18	MATH 205	900
19	BIOL 101	885
20	COM 251	834



UNIVERSITY of HAWAII*

HILO

Top 10 Highest DFIW Rates for Top 100 First Year Courses by Full-Time, First-Time Freshmen: Ten Years

Rank	Course	Total Registrations	DFIW	
		n	n	%↓
78	BIOL 243	114	57	50.0%
87	BIOL 243L	93	45	48.4%
69	GEOG 120	153	69	45.1%
95	PHYS 106	84	36	42.9%
42	CHEM 141	390	162	41.5%
92	BIOL 275	87	36	41.4%
77	GEOL 100	117	45	38.5%
32	CHEM 114	510	195	38.2%
37	MARE 201	435	165	37.9%
17	MATH 103	912	336	36.8%



UNIVERSITY of HAWAII
HILO

Top 10 Highest DFIW “*n*” for Top 100 First Year Courses by Full-Time, First-Time Freshmen: Ten Years

Rank	Course	Total Registrations		DFIW	
		n	n↓	%	
1	PSY 100	3,351	537	16.0%	
8	MATH 100	1,830	429	23.4%	
4	ENG 100T	2,223	429	19.3%	
3	HIST 151	2,565	414	16.1%	
2	ANTH 100	2,820	354	12.6%	
17	MATH 103	912	336	36.8%	
11	GEOG 102	1,164	312	26.8%	
13	MARE 171	1,032	309	29.9%	
9	BUS 100	1,812	306	16.9%	
6	ENG 100	1,890	303	16.0%	



UNIVERSITY of HAWAI'I
HILO

SP14 Leavers* - by College/Division

College	Division	Census (n)	Census (%)	Leavers (n)	Leavers (%)	Leavers/Census
Total		2,673		509		19.0%
Col of Business & Economics		274	10.3%	39	7.7%	14.2%
College of Agriculture		165	6.2%	34	6.7%	20.6%
Ka Haka Ula O Keelikolani		103	3.9%	21	4.1%	20.4%
College of Arts & Sciences		2,131	79.7%	415	81.5%	19.5%
College of Arts & Sciences	Arts & Humanities	302	11.3%	66	13.0%	21.9%
College of Arts & Sciences	General Arts & Sciences	327	12.2%	95	18.7%	29.1%
College of Arts & Sciences	Natural Sciences	653	24.4%	120	23.6%	18.4%
College of Arts & Sciences	School of Nursing	45	1.7%	2	0.4%	4.4%
College of Arts & Sciences	Social Sciences	804	30.1%	132	25.9%	16.4%

Students registered in SP 14 that did not return Fall 14, not incl. graduates



SP14 Leavers – Top 10 Majors

Major	Census (n)	Census (%)	Leavers (n)	Leavers (%)	Leavers/Census
Total	2,673		509		19.0%
Pre-Nursing	192	7.2%	44	8.6%	22.9%
General-Undeclared	112	4.2%	41	8.1%	36.6%
Biology	177	6.6%	39	7.7%	22.0%
Psychology	232	8.7%	36	7.1%	15.5%
Agriculture	165	6.2%	34	6.7%	20.6%
Marine Science	189	7.1%	34	6.7%	18.0%
Kinesiology & Exercise Science	190	7.1%	31	6.1%	16.3%
Business Administration	187	7.0%	26	5.1%	13.9%
Communication	107	4.0%	22	4.3%	20.6%
Administration of Justice	96	3.6%	19	3.7%	19.8%



UNIVERSITY of HAWAI'I
HILO

SP14 Leavers – by Credit Level

	Census (n)	Census (%)	Leavers (n)	Leavers (%)	Leavers/Census
Total	2,673		509		19.0%
≤ 30 credit hours	520	19.5%	146	28.7%	28.1%
31 - 60 credit hours	597	22.3%	114	22.4%	19.1%
61 - 90 credit hours	753	28.2%	111	21.8%	14.7%
91 + credit hours	803	30.0%	138	27.1%	17.2%



UNIVERSITY of HAWAI'I
HILO

SP14 Leavers – by Class Standing

Education Level	Census (n)	Census (%)	Leavers (n)	Leavers (%)	Leavers/Census
Total	2,673		509		19.0%
FR	470	17.6%	134	26.3%	28.5%
SO	541	20.2%	108	21.2%	20.0%
JR	804	30.1%	120	23.6%	14.9%
SR	858	32.1%	147	28.9%	17.1%



SP14 Leavers – by Age

Age	Census (n)	Census (%)	Leavers (n)	Leavers (%)	Leavers/Census
Total	2,673		509		19.0%
Less than 18 years	5	0.2%	2	0.4%	40.0%
18 to 19 years	694	26.0%	157	30.8%	22.6%
20 to 21 years	744	27.8%	103	20.2%	13.8%
22 to 24 years	516	19.3%	101	19.8%	19.6%
25 to 29 years	286	10.7%	55	10.8%	19.2%
30 to 34 years	158	5.9%	38	7.5%	24.1%
35 to 59 years	249	9.3%	46	9.0%	18.5%
60 and over	21	0.8%	7	1.4%	33.3%



SP14 Leavers – by GPA

SP14 EOS CUM GPA	Census (n)	Census (%)	Leavers (n)	Leavers (%)	Leavers/Census
Total	2,667		505		18.9%
0.0 to 1.99	289	10.8%	166	32.9%	57.4%
2.0 to 2.49	422	15.8%	82	16.2%	19.4%
2.5 to 2.99	667	25.0%	102	20.2%	15.3%
3.0+	1,289	48.3%	155	30.7%	12.0%



UNIVERSITY of HAWAI'I
HILO

SP14 Leavers – Transfer to another UH Institution by College

College	Division	Census (n)	Leavers (n)	Transfer Out (n)	Transfer Out/Leavers
Total		2,673	509	96	18.9%
Col of Business & Economics		274	39	5	12.8%
College of Agriculture		165	34	7	20.6%
Ka Haka Ula O Keelikolani		103	21	5	23.8%
College of Arts & Sciences		2,131	415	79	19.0%
College of Arts & Sciences	Arts & Humanities	302	66	6	9.1%
College of Arts & Sciences	General Arts & Sciences	327	95	28	29.5%
College of Arts & Sciences	Natural Sciences	653	120	21	17.5%
College of Arts & Sciences	School of Nursing	45	2	1	50.0%
College of Arts & Sciences	Social Sciences	804	132	23	17.4%



UNIVERSITY of HAWAII
HILO

SP14 Leavers – Transfer to another UH Institution – Top 10 by Major

Major	Census (n)	Leavers (n)	Transfer Out (n)	Transfer Out/Leavers
Total	2,673	509	96	18.9%
Pre-Nursing	192	44	19	43.2%
Psychology	232	36	9	25.0%
Kinesiology & Exercise Science	190	31	8	25.8%
Biology	177	39	7	17.9%
Agriculture	165	34	7	20.6%
Marine Science	189	34	6	17.6%
Hawaiian Studies	75	17	5	29.4%
Pre-Engineering	23	10	5	50.0%
General-Undeclared	112	41	4	9.8%
Chemistry	81	12	4	33.3%



UNIVERSITY of HAWAII
HILO

Executive Summary

- Attend class, read the books, do the HW, time management, pro-active advising
- Choose a major asap (UNI 102, spring)
- Health Profession Advising (PB13)
<http://hilo.hawaii.edu/uhh/vcaa/HPAC.php>
- Liberal Studies Tracks in Health Care (Administration, Community Health)
- Social Science Advising (KES, PSY-Cheryl Ramos)
- Surveys in the second and the final week



UNIVERSITY of HAWAII*
HILO

Mahalo nui to the UNI 101 Committee

Kurt de la Cruz, Emmeline de Pillis, Tom
De Witt, Norbert Furumo; Gail
Makuakane-Lundin, Ho'oululahui Perry,
Jake Picus, Comfort Sumida

[http://hilo.hawaii.edu/uhh/vcaa/
documents/UNI101.pdf](http://hilo.hawaii.edu/uhh/vcaa/documents/UNI101.pdf)

Mahalo nui to you for stepping up to teach!