

STATE OF HAWAII
 UNIVERSITY OF HAWAII
 UNIVERSITY OF HAWAII AT HILO
 STUDENT AFFAIRS
 POSITION ORGANIZATION CHART
 CHART V

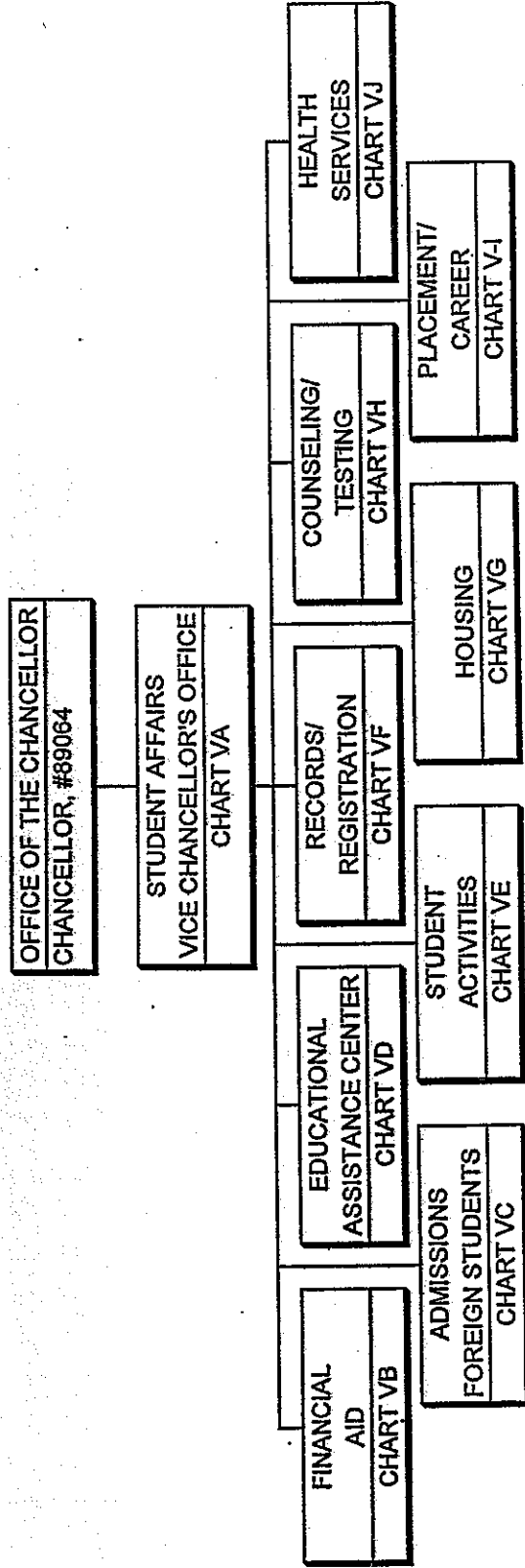


CHART UPDATED

CSA

DATE JUL - 1 2007

OFFICE OF THE CHANCELLOR
 CHANCELLOR, #89084

ATHLETICS
 DIRECTOR, #89166

SECRETARY II, SR14, #86750

ATH COMPLIANCE OFFT, PBB, #81669
 CERT ATH TRAINER, PBB, #81651
 CERT ATH TRAINER, PBB, #81057
 PUBLIC INFO OFFICER, PBB, #80912

BASBEALL
 UH HEAD BASEBALL COACH,
 #80895

BASKETBALL
 UH MENS HEAD BASKETBALL COACH
 #81475
 UH WOMENS HEAD BASKETBALL
 COACH, #87122F@

VOLLEYBALL
 UH WOMENS HEAD VOLLEYBALL
 COACH, #81636

SOFTBALL
 UH WOMENS HEAD BASEBALL
 COACH, #81142

SOCCER
 UH WOMENS HEAD SOCCER COACH
 #87624F@

INTRAMURAL
 STUDENT SERV SP, PBB
 #81688

GOLF
 COACH - MEN
 UH WOMENS HEAD GOLF COACH, #87623F@

TENNIS
 COACH - MEN
 COACH - WOMEN

CROSS COUNTRY
 COACH - MEN
 COACH - WOMEN

@ Pending Establishment

STATE OF HAWAII
 UNIVERSITY OF HAWAII
 UNIVERSITY OF HAWAII AT HILO
 ADMINISTRATIVE AFFAIRS
 POSITION ORGANIZATION CHART
 CHART VII

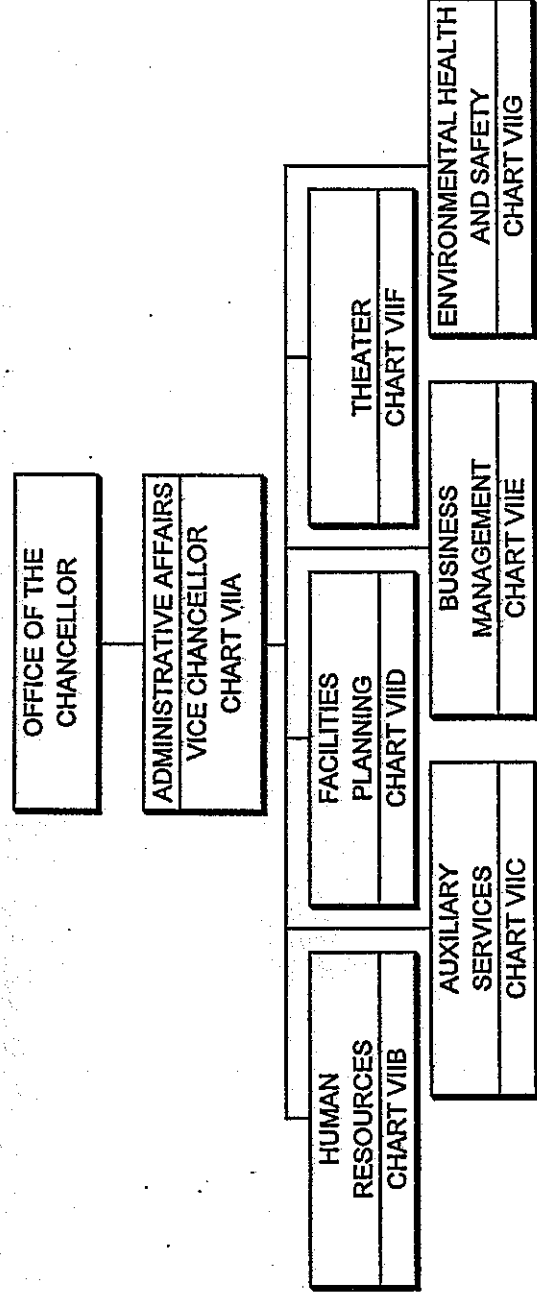
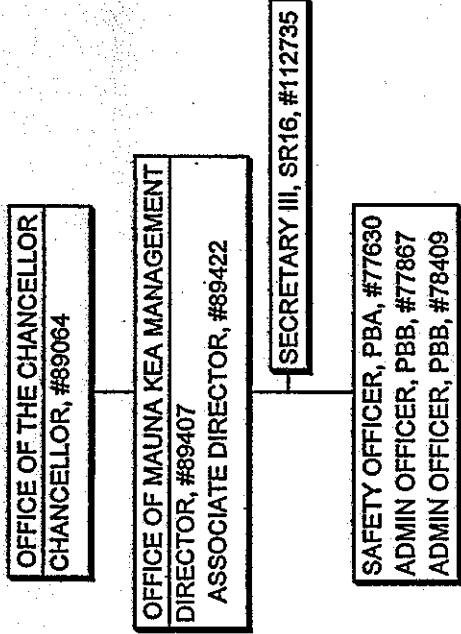


CHART UPDATED

DATE JUL - 1 2007 ADMOR

STATE OF HAWAII
 UNIVERSITY OF HAWAII
 UNIVERSITY OF HAWAII AT HILO
 OFFICE OF MAUNA KEA MANAGEMENT
 POSITION ORGANIZATION CHART
 CHART VIII



POSITIONS

GENERAL FUND - 6.00

MAUNA KEA

CHART UPDATED

DATE JUL - 1 2007

STATE OF HAWAII
 UNIVERSITY OF HAWAII
 UNIVERSITY OF HAWAII AT HILO
 TECHNOLOGY AND DISTANCE LEARNING
 POSITION ORGANIZATION CHART
 CHART IX

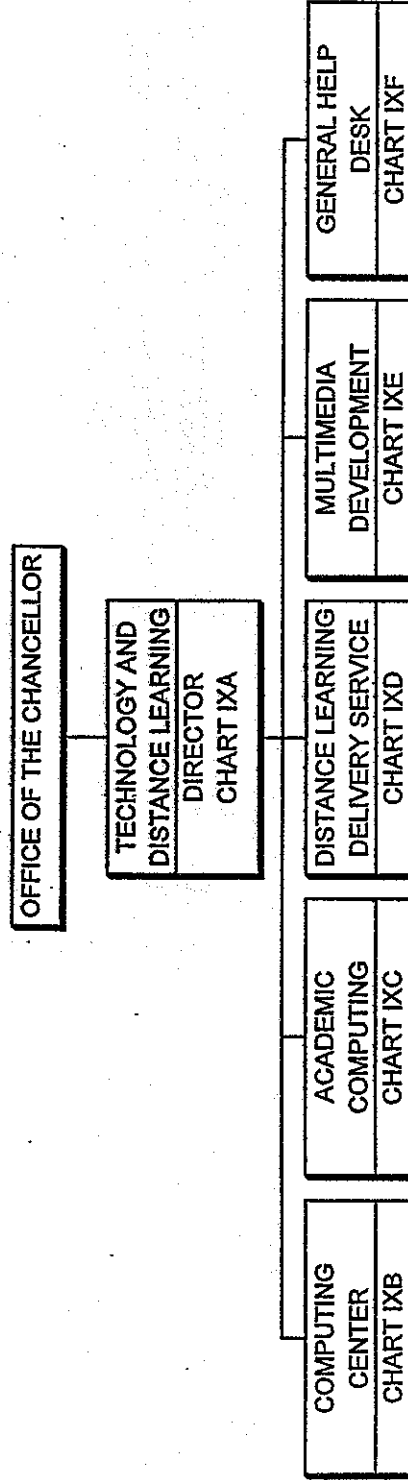


CHART UPDATED
 DATE JUL - 1 2007