

STATE OF HAWAII  
 UNIVERSITY OF HAWAII  
 UNIVERSITY OF HAWAII AT HILO  
 POSITION ORGANIZATION CHART  
 CHART I

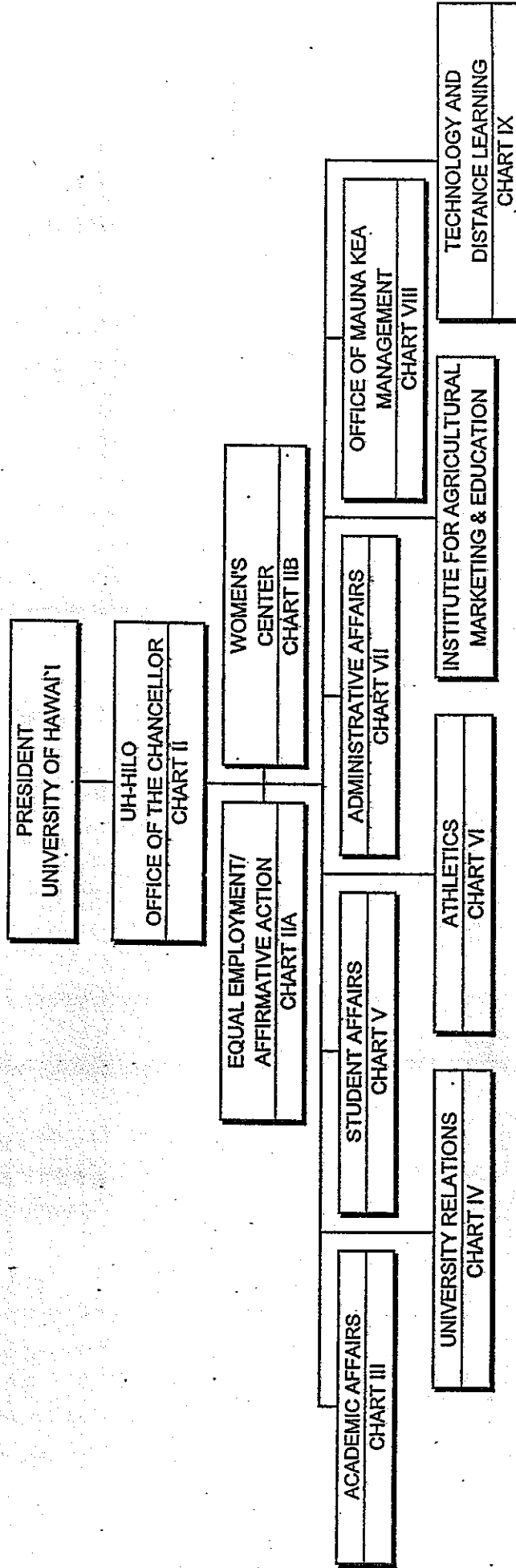
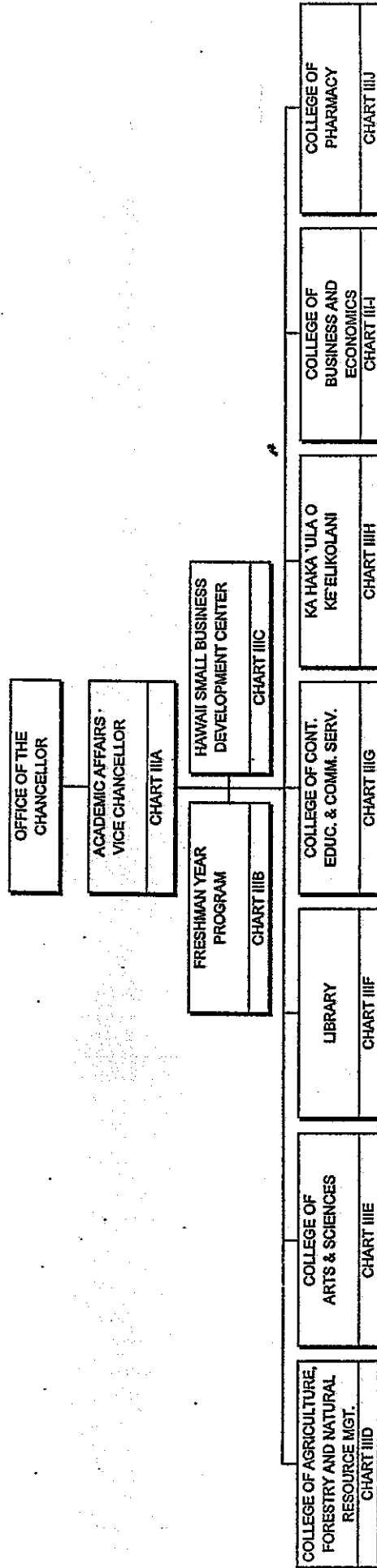


CHART UPDATED

DATE JUL - 1 2007

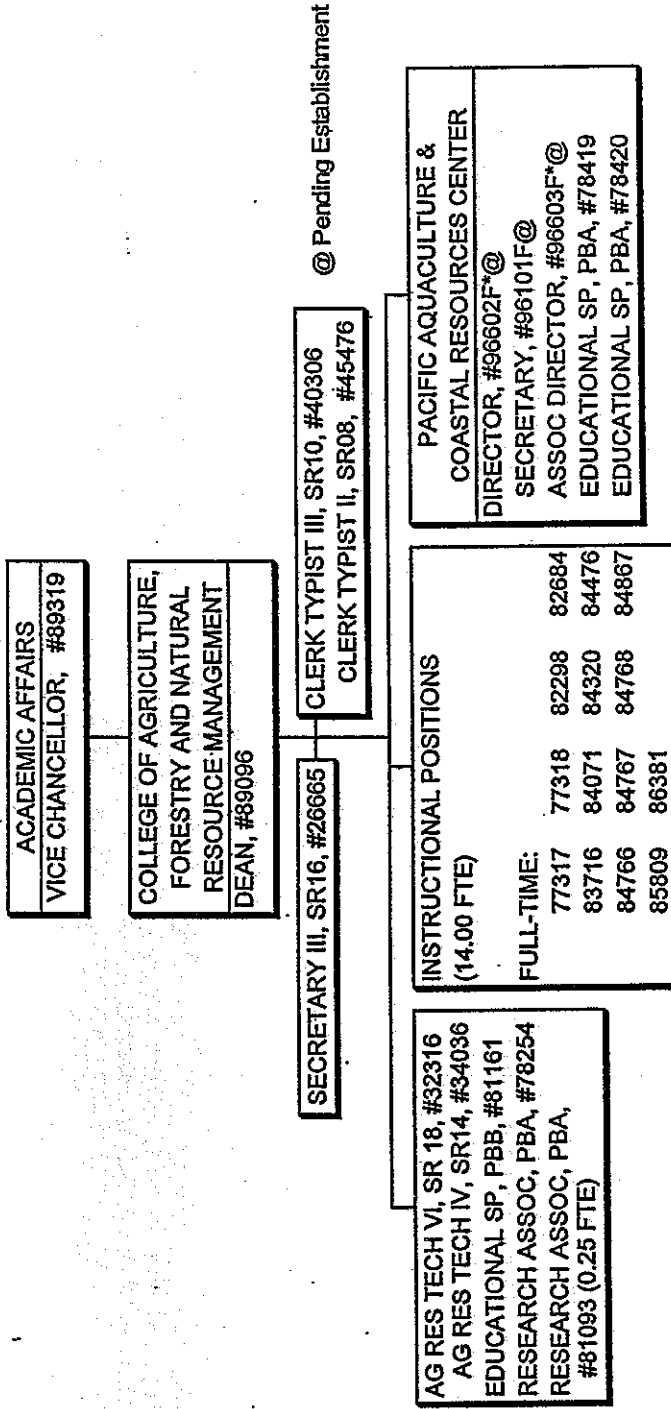
UH-HILO

STATE OF HAWAII  
 UNIVERSITY OF HAWAII  
 UNIVERSITY OF HAWAII AT HILO  
 ACADEMIC AFFAIRS  
 POSITION ORGANIZATION CHART  
 CHART III



ACADEMIC  
**CHART UPDATED**  
 DATE JUL - 1 2007

STATE OF HAWAII  
 UNIVERSITY OF HAWAII  
 UNIVERSITY OF HAWAII AT HILO  
 ACADEMIC AFFAIRS  
 COLLEGE OF AGRICULTURE, FORESTRY AND  
 NATURAL RESOURCE MANAGEMENT  
 POSITION ORGANIZATION CHART  
 CHART III D

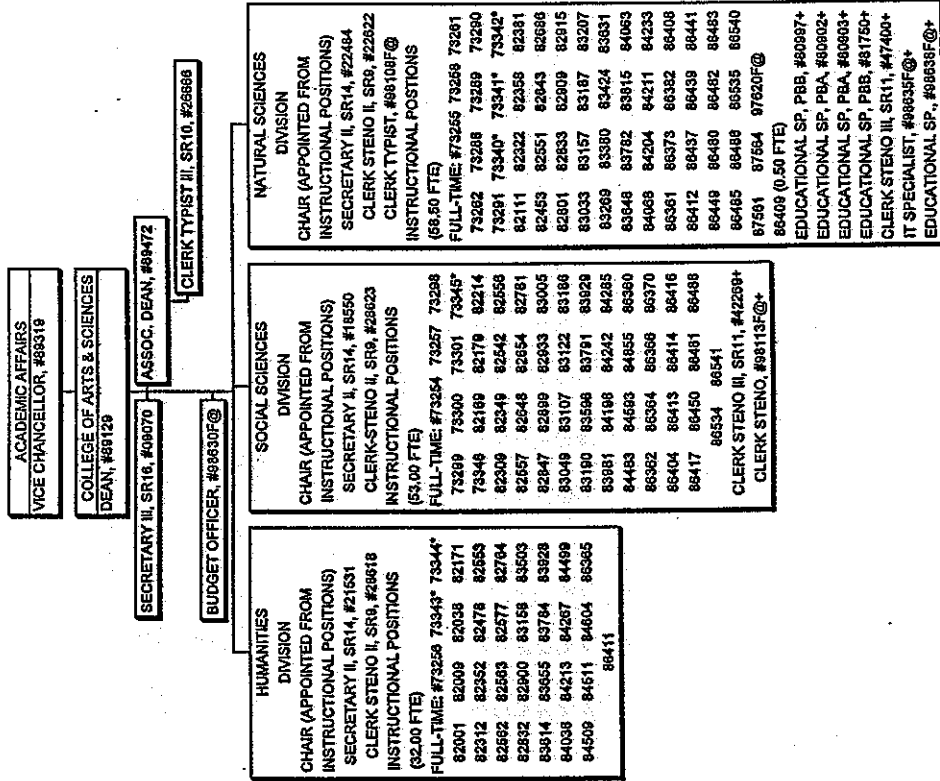


@ Pending Establishment

POSITIONS GENERAL FUND - 27.25

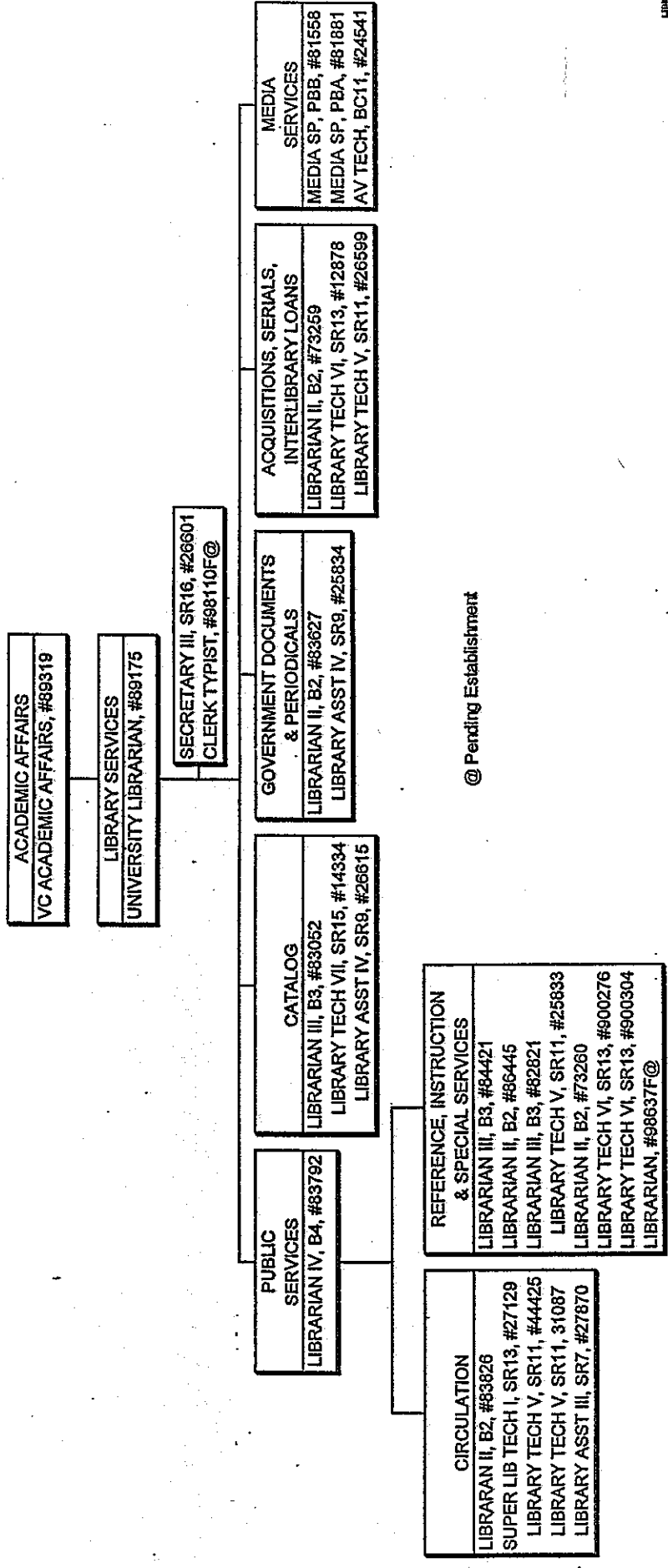
CHART UPDATED  
 DATE JUL - 1 2007

AGRICULTURE



\* Reports to Departmental Chairs  
 @ Paying Establishment

STATE OF HAWAII  
 UNIVERSITY OF HAWAII  
 UNIVERSITY OF HAWAII AT HILO  
 ACADEMIC AFFAIRS  
 LIBRARY SERVICES  
 POSITION ORGANIZATION CHART  
 CHART III



@ Pending Establishment

POSITIONS GENERAL FUND - 28.00

LIBRARY  
 CHART UPDATED  
 DATE JUL - 1 2007

STATE OF HAWAII  
 UNIVERSITY OF HAWAII  
 UNIVERSITY OF HAWAII AT HILO  
 ACADEMIC AFFAIRS  
 COLLEGE OF CONT. EDUC. & COMM. SERVICE  
 POSITION ORGANIZATIONAL CHART  
 CHART III G

ACADEMIC AFFAIRS  
 VICE CHANCELLOR, #89319

COLL OF CONT ED & COMM SERV  
 DEAN, #89057

ACCOUNT CLERK III, SR11, #25234\*  
 SECRETARY II, SR14, #25886\*  
 CLERK STENO II, SR9, #32509\*

CREDIT PROGRAM  
 EDUCATIONAL SP, PBB #80570

SENIOR PROGRAM  
 EDUCATIONAL SP, PBB, #80501\*

PERSONAL & PROFESSIONAL DEVELOPMENT PROGRAM  
 EDUCATIONAL SP, #82611F@\*

INTERNATIONAL PROGRAM  
 INSTRUCTOR, I2, #86455\*  
 JR SPECIALIST, S2, #86473\*  
 INSTRUCTOR, I2, #86474\*  
 EDUCATIONAL SP, #92602F@\*  
 INSTRUCTOR, #92606F@\*

CONFERENCE PROGRAM  
 EDUCATIONAL SP, #92607F@\*  
 EDUCATIONAL SP, #92608F@\*  
 EDUCATIONAL SP, #92609F@\*  
 EDUCATIONAL SP, #92610F@\*

NORTH HAWAII EDUCATION & RESEARCH CENTER  
 DIRECTOR, #96600F@  
 EDUCATIONAL SP, #96601F@  
 SECRETARY, #96100F@  
 JR. SPEC., #98625F@  
 JANITOR, #97317F@

@ Pending Establishment

POSITIONS  
 GENERAL FUNDS - 7.00  
 SPECIAL FUNDS - 14.00\*

CHART UPDATED  
 DATE JUL - 1 2007

STATE OF HAWAII  
 UNIVERSITY OF HAWAII  
 UNIVERSITY OF HAWAII AT HILO  
 ACADEMIC AFFAIRS  
 KA HAKA 'ULA O KE'ELIKOLANI  
 POSITION ORGANIZATION CHART  
 CHART IIIH

ACADEMIC AFFAIRS  
 VICE CHANCELLOR, #89319

KA HAKA 'ULA O  
 KE'ELIKOLANI  
 DEAN, #97612F@

FISCAL SP, PBA, #77769  
 ED SPECIALIST, #97613F@  
 ADMIN OFFICER, #97615@

HALE KUAMO'O CENTER  
 EDUCATIONAL SP, PBB, #81241  
 CLERK TYPIST II, SR8, #44260

@ Pending Establishment

MOKUNA PAPA HANA KALAI'IKE			
INSTRUCTIONAL POSITIONS			
(14.00 FTE)			
FULL-TIME			
73263	73264	73302	73303
73304	83148	83223	83590
86410	86427	86460	86508
86531	86532		

POSITIONS  
 GENERAL FUND - 20.00

CHART UPDATED KA HAKA 'ULA  
 DATE JUL - 1 2007

STATE OF HAWAII  
 UNIVERSITY OF HAWAII  
 UNIVERSITY OF HAWAII AT HILO  
 ACADEMIC AFFAIRS  
 COLLEGE OF BUSINESS AND  
 ECONOMICS  
 POSITION ORGANIZATION CHART  
 CHART III-H

ACADEMIC AFFAIRS  
 VICE CHANCELLOR, #89319

COLLEGE OF BUSINESS AND ECONOMICS  
 DEAN, #89295

SECRETARY III, SR16, #26667  
 CLERK STENO II, SR9, #45475

INSTRUCTION	
INSTRUCTIONAL POSITIONS	
(18.00 FTE)	
FULL-TIME	
73282	73336 82063 82303
82311	82702 82775 82831
83229	83259 83350 83555
83749	83971 84284 84510
86367	86487

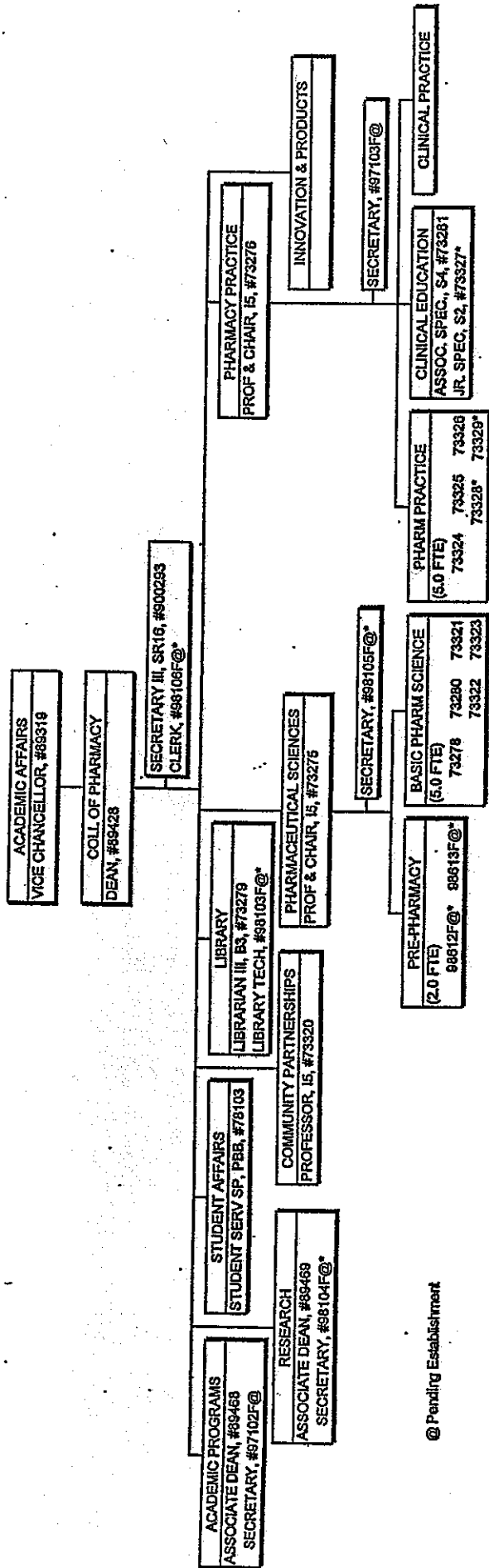
POSITIONS  
 GENERAL FUND - 21.00

COLLEGE OF  
 BUSINESS

CHART UPDATED

DATE JUL - 1 2007





POSITIONS  
 GENERAL FUNDS - 20.00  
 SPECIAL FUNDS\* - 9.00

U.B.O. Footnote:  
 This chart reflects permanent positions appropriated by the Legislature as of July 1, 2007 in a proposed organization pending approval by the Chancellor.

CHART UPDATED  
 DATE JUL - 1 2007

PHARMACY