

LIFE CYCLE OF A WĒKIU BUG

DIVISION OF FORESTRY AND WILDLIFE, NATURAL AREA RESERVE SYSTEM

THANKS TO CONSULTATION WITH DR. JESSE EIBEN, UH HILO, COLLEGE OF AGRICULTURE, FORESTRY, AND NATURAL RESOURCE MANAGEMENT (CAFNRM)

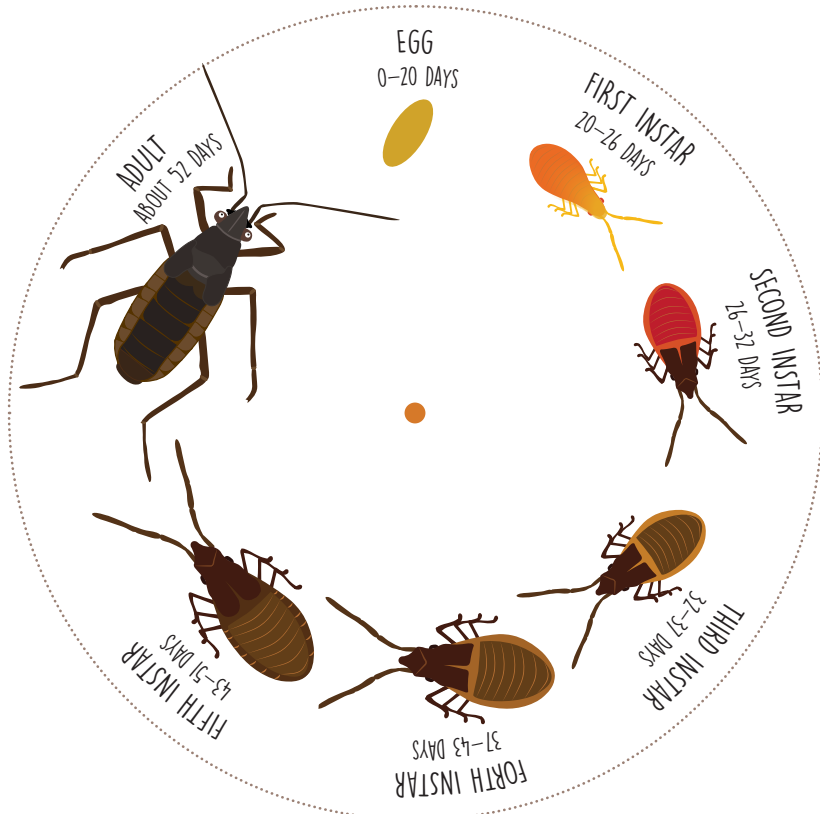
MATERIALS NEEDED

1. Scissors
2. Metal fastener (1)



INSTRUCTIONS

1. Cut out both circles along dotted lines. Cut out wedge along dotted line.
2. Place circle with cut out wedge on top of white circle with wēkiu life cycle.
3. Align circles and use a thumbtack to make a pilot hole through the center of the orange dot on the top circle. Push metal fastener through the pilot hole, through both circles. Bend metal wings down on the back to secure piece.
4. Cut out the fact card below and wow your friends with how much you know about the amazing wēkiu bug!



ALL ABOUT THE WĒKIU BUG

- The wēkiu bug lives among the cinders on 19 different pu'u (hills) high up on the mountain (above 11,500 feet).
- Unlike its cousins, the wēkiu bug has miniature wings and cannot fly.
- Wēkiu are endemic to Maunakea, meaning they are found nowhere else in the world!
- Wēkiu feed on the blood and organs of insects that are blown up the mountain by piercing them with its straw-like mouth.
- Wēkiu can survive their bodies cooling below temperatures that are lethal to most insects.
- The wēkiu bug's development includes 5 instars. An instar is a stage of immature insect growth before becoming an adult. During each instar the insect eats and grows then sheds its outer covering called an exoskeleton. When the exoskeleton is shed the wēkiu bug enters the next instar.